



## IMPORTANT KEEP FOR FUTURE REFERENCE

THIS SAFETY GATE IS SUITABLE FOR CHILDREN UP TO 24 MONTHS OF AGE

THIS GATE COMPLIES TO EN 1930:2000 WHEN FITTED AS INSTRUCTED

CUSTOMER CARELINE 0871 702 1000 (MON - FRI, 10AM - 4PM, UK ONLY)

PRODUCT CODES: 44435, 44436, 44437

LINDAM LIMITED HORNBEAM PARK HARROGATE HG2 8PA ENGLAND [WWW.LINDAM.COM](http://WWW.LINDAM.COM)



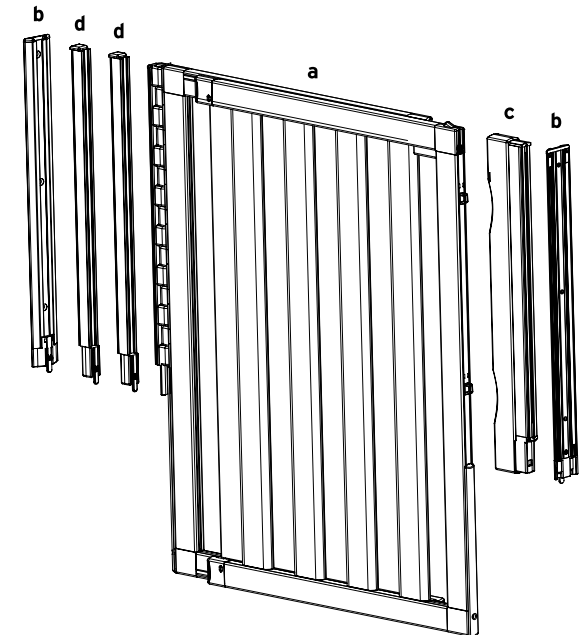
We wish you a great deal of pleasure from your **numi** purchase.

Form follows function, the essential ethos of classic design. Appealing to those with an eye for aesthetics as well as for security, **numi** by Lindam is a beautifully designed collection of furniture and an advanced development in safety. Manufactured from the highest quality materials, the **numi** range will make a proud and practical addition to any home.

Please take a few minutes to read your instructions fully to understand the full safety benefits of your gate. Please note: In the event of damage or loss, components are only available from Lindam. For parts or assistance please call the Lindam careline on: 0871 702 1000 (Monday - Friday 10am - 4pm UK only) or email careline@lindam.com

Please check that you have the following items in your **numi** gift box:

- a 1 x gate
- b 2 x wall fixing plates
- c 1 x latch bracket
- d 2 x spacers (adjoined)
- 6 x screws
- 6 x wall plugs



**contents**

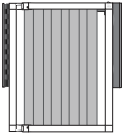
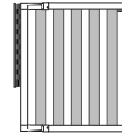
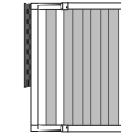
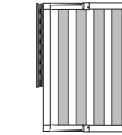
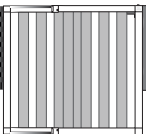
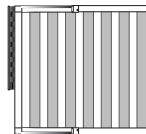
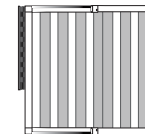
Contents of box .....	3
<b>Assembling your numi gate</b>	
Indexed sizing System .....	4
Spacers .....	7
Wall fixing plates .....	8
Integrated Tuning System .....	11
Using Your <b>numi</b> Gate .....	12
Releasing your <b>numi</b> gate .....	12
<b>Safety and Warnings</b>	
Cleaning, Safety and Warnings .....	13

## set your gate to the correct width using the Indexed Sizing System (ISS)

Check the width of the opening where you intend to fit your **numi** Gate. The smallest opening can be 66cm and the largest opening can be 101cm.

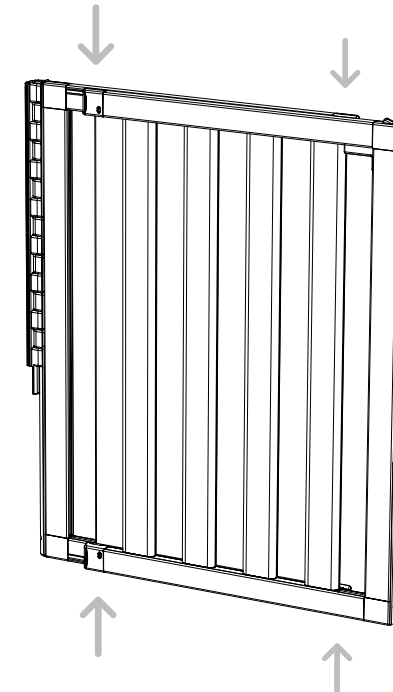
- **IMPORTANT:** Do not attempt to use your **numi** gate in openings larger than 101cm.

Look at the diagrams below and make a note of which table refers to your opening width. The information will tell you the index position of your extension, how your **numi** gate will look when properly assembled and how many spacers you will need. Use the minimum number of spacers possible.

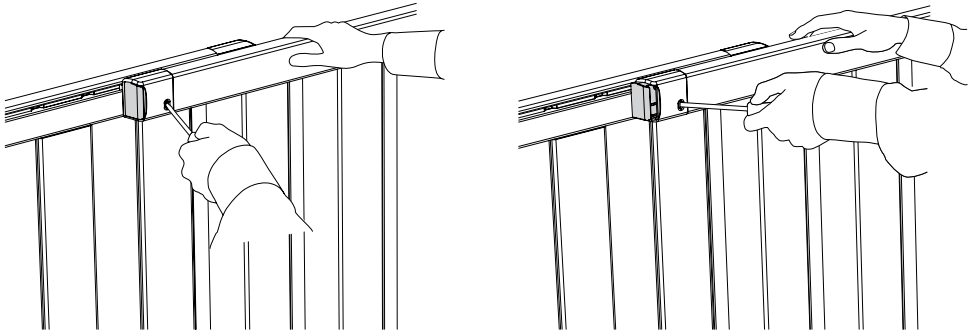
ISS table																																			
(as supplied)																																			
<b>index 1</b> 66 - 71.5cm	<b>index 2</b> 71 - 76.5cm	<b>index 3</b> 76 - 81.5cm	<b>index 4</b> 81 - 86.5cm																																
																																			
<table border="1"><thead><tr><th>width</th><th>spacer</th></tr></thead><tbody><tr><td>66 - 68</td><td>0</td></tr><tr><td>68.75 - 69.75</td><td>1</td></tr><tr><td>69.5 - 71.5</td><td>2</td></tr></tbody></table>	width	spacer	66 - 68	0	68.75 - 69.75	1	69.5 - 71.5	2	<table border="1"><thead><tr><th>width</th><th>spacer</th></tr></thead><tbody><tr><td>71 - 73</td><td>0</td></tr><tr><td>72.75 - 74.75</td><td>1</td></tr><tr><td>74.5 - 76.5</td><td>2</td></tr></tbody></table>	width	spacer	71 - 73	0	72.75 - 74.75	1	74.5 - 76.5	2	<table border="1"><thead><tr><th>width</th><th>spacer</th></tr></thead><tbody><tr><td>76 - 78</td><td>0</td></tr><tr><td>77.75 - 79.75</td><td>1</td></tr><tr><td>79.5 - 81.5</td><td>2</td></tr></tbody></table>	width	spacer	76 - 78	0	77.75 - 79.75	1	79.5 - 81.5	2	<table border="1"><thead><tr><th>width</th><th>spacer</th></tr></thead><tbody><tr><td>81 - 83</td><td>0</td></tr><tr><td>82.75 - 84.75</td><td>1</td></tr><tr><td>84.5 - 86.5</td><td>2</td></tr></tbody></table>	width	spacer	81 - 83	0	82.75 - 84.75	1	84.5 - 86.5	2
width	spacer																																		
66 - 68	0																																		
68.75 - 69.75	1																																		
69.5 - 71.5	2																																		
width	spacer																																		
71 - 73	0																																		
72.75 - 74.75	1																																		
74.5 - 76.5	2																																		
width	spacer																																		
76 - 78	0																																		
77.75 - 79.75	1																																		
79.5 - 81.5	2																																		
width	spacer																																		
81 - 83	0																																		
82.75 - 84.75	1																																		
84.5 - 86.5	2																																		
<b>index 5</b> 86 - 91.5cm	<b>index 6</b> 91 - 96.5cm	<b>index 7</b> 96 - 101cm																																	
																																			
<table border="1"><thead><tr><th>width</th><th>spacer</th></tr></thead><tbody><tr><td>86 - 88</td><td>0</td></tr><tr><td>87.75 - 89.75</td><td>1</td></tr><tr><td>89.5 - 91.5</td><td>2</td></tr></tbody></table>	width	spacer	86 - 88	0	87.75 - 89.75	1	89.5 - 91.5	2	<table border="1"><thead><tr><th>width</th><th>spacer</th></tr></thead><tbody><tr><td>91 - 93</td><td>0</td></tr><tr><td>92.75 - 94.75</td><td>1</td></tr><tr><td>94.5 - 96.5</td><td>2</td></tr></tbody></table>	width	spacer	91 - 93	0	92.75 - 94.75	1	94.5 - 96.5	2	<table border="1"><thead><tr><th>width</th><th>spacer</th></tr></thead><tbody><tr><td>96 - 98</td><td>0</td></tr><tr><td>97.75 - 99.75</td><td>1</td></tr><tr><td>99.5 - 101</td><td>2</td></tr></tbody></table>	width	spacer	96 - 98	0	97.75 - 99.75	1	99.5 - 101	2									
width	spacer																																		
86 - 88	0																																		
87.75 - 89.75	1																																		
89.5 - 91.5	2																																		
width	spacer																																		
91 - 93	0																																		
92.75 - 94.75	1																																		
94.5 - 96.5	2																																		
width	spacer																																		
96 - 98	0																																		
97.75 - 99.75	1																																		
99.5 - 101	2																																		

To extend your **numi** gate using the Index positions firstly you will need to unlock your gate. Your gate is locked by four Indexed mechanism locks (ISS locks) indicated below.

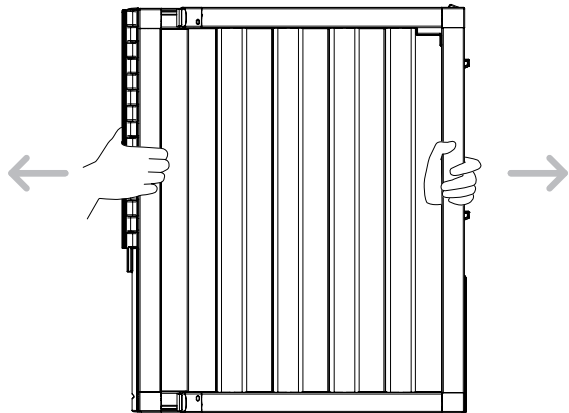
ISS



To unlock your ISS locks, take a small flat head screwdriver, insert to depress each button and push outwards as indicated in the diagrams below. This process should be repeated on all four locks, two on either side of your **numi** gate.



Whilst holding the outer uprights of your **numi** gate pull the gate outwards to extend. Each click you hear represents an index position. Once you have extended your gate to the correct width as indicated in your relevant table on page 4, relock your **numi** gate by repressing each of the ISS button locks using your hands. You will hear a clicking sound when this has been done properly. Please note that the buttons will not lock unless the gate is located in an index position.



6

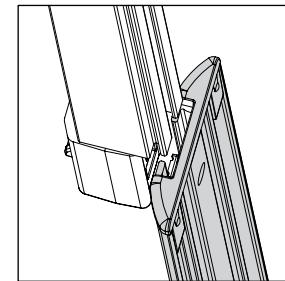
## spacers

Please refer to the table on page 4 that is relevant to your opening width.

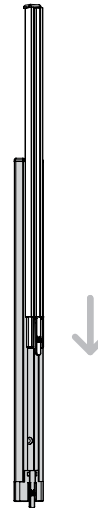
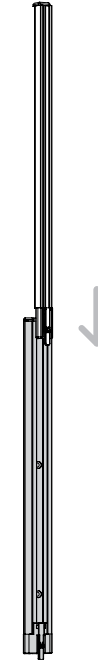
If required add a maximum of two spacers to a wall fixing plate as instructed in the diagram below. Simply slide the spacer down on the wall fixing plate until it clicks in place.

- Spacers must only be added to the wall fixing plate which holds the hinge of your **numi** gate
- If you do not use both of your supplied spacers please keep them stored safely.

1



2



7

## wall fixing plate

Your **numi** gate will need to be mounted to the wall using the two wall fixing plates supplied to you. These will need to be drilled and screwed to your wall.

### Wall fixing plate 1

Measure 74.5cm height from the floor at the point where you would like to mount your gate. Make a mark. This is where you should drill the top hole for your wall fixing plate. Using this wall fixing plate as a template you can mark where the lower holes should be drilled into your wall. Ensure that the plate is at right angles to the floor and attach using the most appropriate method below.

- We recommend you use a spirit level for accuracy.
- **WARNING: DO NOT** attach the hinge side fixing plate to a hollow plaster board wall.
- As not even modern homes have perfectly parallel walls please refrain from attaching your second wall mount to the wall just yet.

### WOOD FIXING:

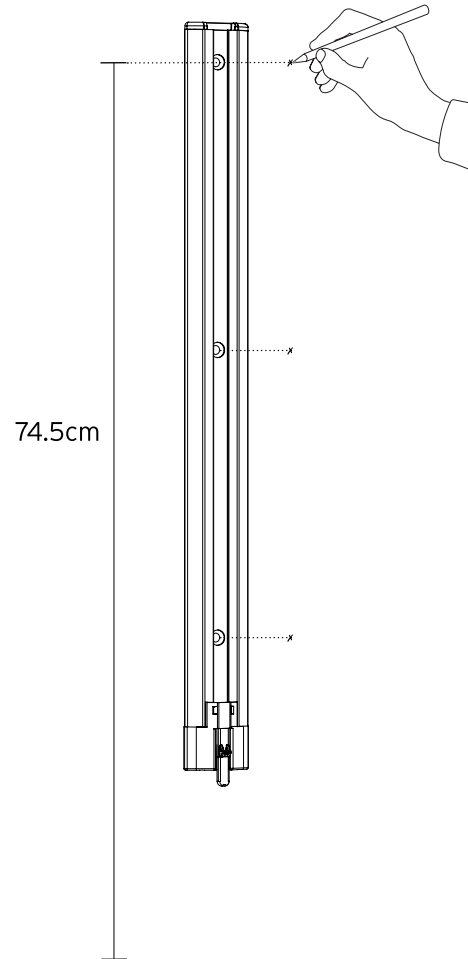
Drill 2mm pilot holes and use the wood screws provided screwing directly into the wood.

### PLASTER WALL FIXING:

Drill 6mm (1/4") holes and insert the wall plugs provided before screwing into these.

### HOLLOW PLASTER BOARD WALLS:

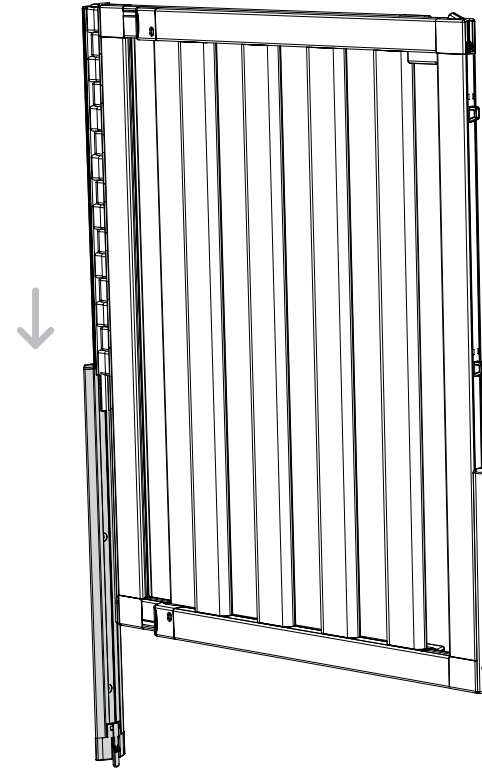
Hollow walls constructed of plaster board require special fixing (not supplied). You will need to purchase heavy duty expandable wall plugs (available at DIY stores).



8

## sliding your numi gate onto your wall fixing plate

Now the initial wall fixing plate is attached to your wall, slide your **numi** gate on to it until it is fully secure and you hear a clicking sound.



9

## Wall fixing plate 2

Take your second wall fixing plate and slide on to your latch bracket as illustrated. (1)

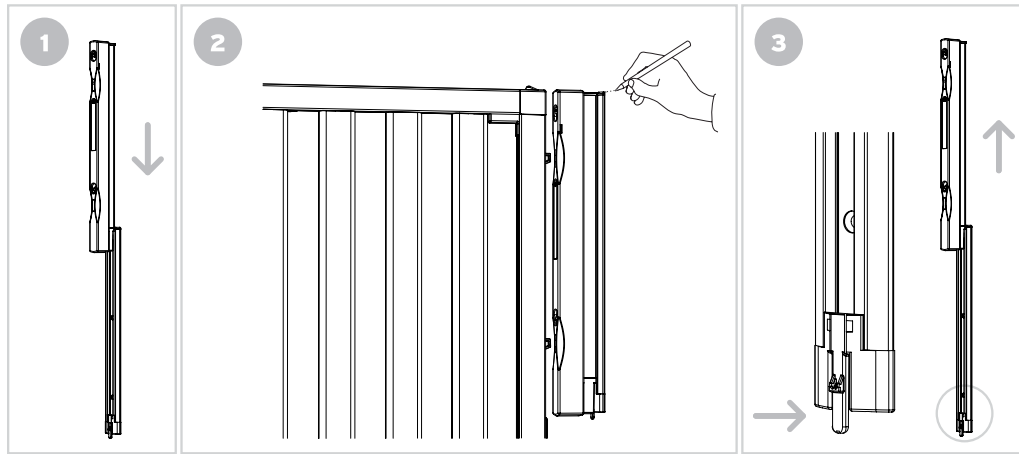
Line this up so that the top of your **numi** gate is level with the top of the latch bracket. Make a mark at the top as to where you need to attach the wall fixing plate to the wall (2).

- Please note that your latch bracket will be adjusted at a later stage so that your **numi** gate will fit perfectly (see page 11).

Remove the latch bracket from the wall fixing plate. Whilst pushing the thumb release at the bottom of the wall fixing plate lift the latch bracket to remove (3).

Align your wall fixing plate to the mark you have just made and attach it to the wall using the process explained on page 8.

Reattach the latch bracket to the second wall fixing plate (1).

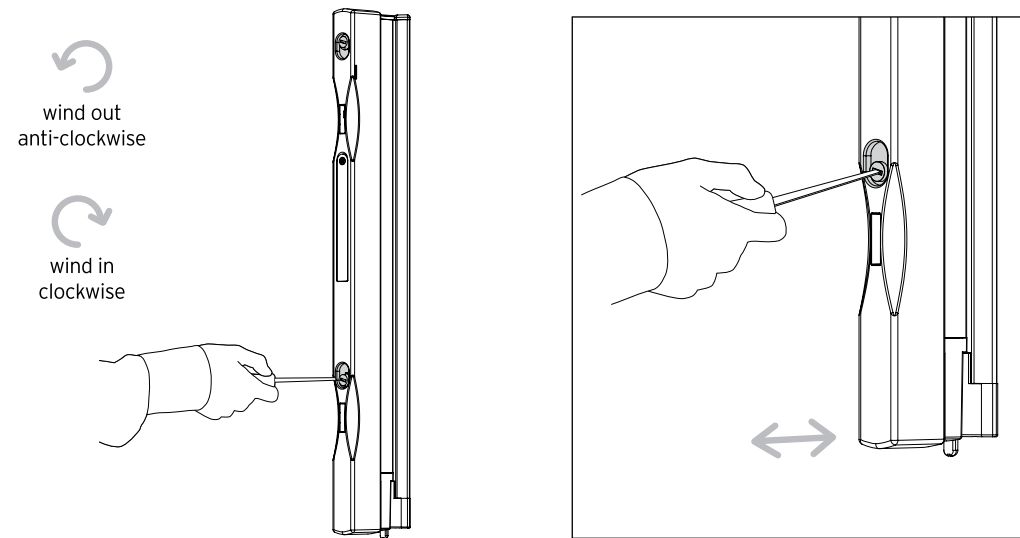


## Integrated Tuning System (ITS)

Now check if your **numi** gate reaches the latch bracket. If it does not, adjust the latch bracket using the Integrated tuning system.

This is a simple trial and error process. Using a screwdriver, wind the bracket in/out at the ITS points shown below. Once fitted correctly the gap between the gate and the latch bracket should be no more than 1mm.

- Please note that this process will help you if your walls are uneven.



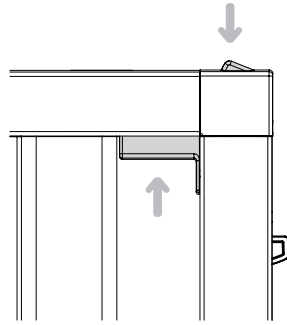
## using your numi gate

Your **numi** gate should now be fully assembled and ready to use.

To open your gate: depress thumb button and lift lever

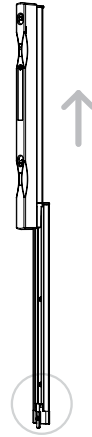
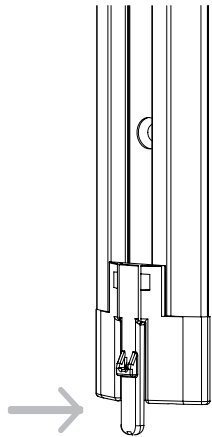
To close your gate: push to shut

- Always check that your **numi** gate is properly closed and secured both top and bottom. We advise that you check that your gate is properly fitted on a daily basis and that all attachments and locking devices are operating correctly.



## releasing your numi gate

For when your **numi** gate is not in use or needs to be moved, simply release the gate and the latch bracket from the two wall fixing plates. Whilst pushing the thumb release at the bottom of each plate towards the wall (as illustrated below) lift the gate or the latch bracket to remove.



## cleaning

Simply wipe with a soft damp cloth. Do not use harsh or abrasive cleaning agents.

## safety

- Minimum opening: 66CM
- Maximum opening: 101CM
- WARNING! Incorrect fitting or positioning of this safety barrier can be dangerous
- You must fit your gate in a strong and secure opening and ensure the surfaces are dry, solid and clean
- The barrier can not be fitted to a wall where dado rails are below 114cm height
- WARNING! This safety barrier must not be fitted across windows and similar openings
- Complies to BSEN 1930:2000 when fitted as instructed
- Suitable for use with children up to 24 months of age
- This safety barrier will not necessarily prevent all accidents. Never leave children unattended.
- A daily check on the gate is recommended to ensure that your gate remains securely fixed.
- Eventually your child will reach an age at which they are capable of opening your gate. Children will develop physically and mentally at different rates, therefore it is important that you monitor your child's capabilities.
- Never allow young children to swing on the gate.
- Ensure that the gate is properly closed at all times.
- The gate is designed for indoor use only.
- A swinging gate can trap small hands.
- For children over 24 months of age parental supervision is advised.
- Do not allow older children to climb on or over the gate as this can result in an accident.
- Do not remove the safety notices, you may not always be the user.
- If you require spare parts for your gate please obtain them direct from Lindam Ltd.
- Retain these instructions as you may wish to reposition the gate.
- WARNING! Stop using the barrier if the child is capable of climbing it.
- WARNING! Do not use the safety barrier if any components are damaged or missing.
- WARNING! Do not leave this gate open at any time. Remove the gate if not in use for long periods.

It should only take 10 minutes to fit your gate. We recommend that you carry out the installation away from young children as some of the smaller components may present a choking hazard when loose.

**WARNING:** The position of your safety barrier in relation to the stairs is very important for your child's safety. Your gate may be better positioned across your landing to prevent access to the stairs completely. If you do require your gate to be positioned at the top of the stairs to prevent your child descending, the gate must be fitted on the very top stair. You should swing the gate away from your stairs when opening. If you intend to use the gate at the bottom of the stairs then it must be placed on the lowest stair, towards the front of the step, away from the 2nd step.

